

**Inline Deflagration Flame Arrester**

**EC design test certificate no.**

**Standard gap (MESG)**

**Explosion group**

**Operating direction**

**Flange connection**

**Thread connection**

**Weight**

: 1003-0019-70

: IBExU 14 ATEX 2025 X

:  $\geq 0,50$  mm

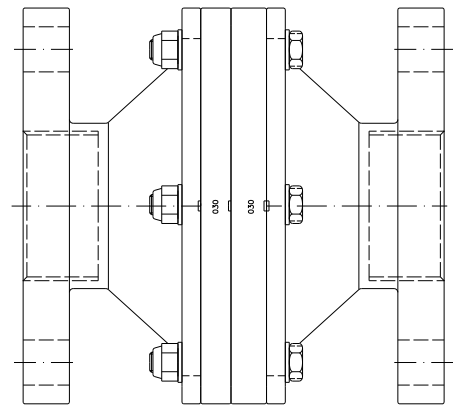
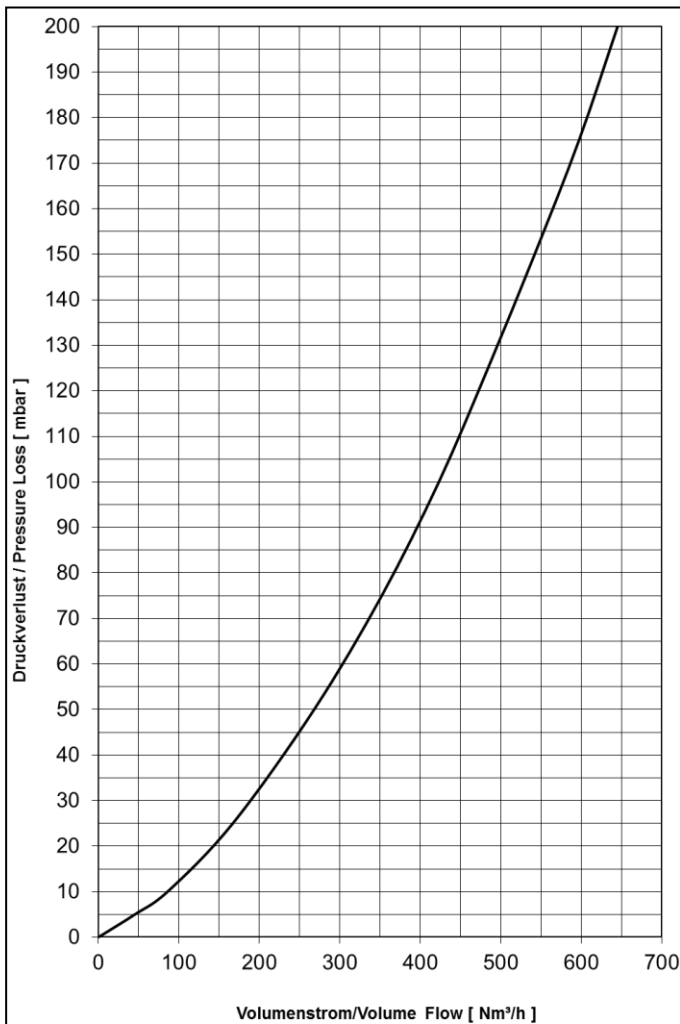
:  $\text{Ex}$  G IIB

: Bidirektional / Bi-directional

: EN1092-1(DIN2576) PN10/16

: G2" innen/internal ISO228-1

: ~ 11,0 kg



**Material**

Housing

V4A/AISI 316 range

Flame Arrester Element

1.4571 / AISI 316 Ti

O-Ring

PTFE

**Operating Data**

Type : DEF

Absolute pressure :  $\leq 1,2$  bar

Temperature :  $\leq 60,0$  °C

Nominal pipe size :  $\leq$  DN50

Pressure loss

Medium Air

$p_0 = 1013$  mbar,  $T_0 = 273$ K, density = 1,293 kg/m<sup>3</sup>